

## Oxequip® Med\*Star® DISS Medical Gas Outlets

### Elements

- Safety keyed to prevent cross-connections
- Conforms to NFPA 99 and CSA standards
- Modular design
- Cleaned for oxygen service
- UL Listed



### Description

The Oxequip Diameter Index Safety System (DISS) Series outlet stations provide convenient access to medical gases in patient care locations. They are fully compatible with DISS style diameter indexed threaded adapters.

The outlets can be grouped together in any order desired by the facility. Outlets are spaced 5" (12.7 cm) center to center. Outlet finish plates and rough-in plates are pin indexed using steel pins for positive cross-connection prevention. The chrome-plated brass valve bodies contain a self-sealing poppet, and are separate from the finish plate, allowing easy testing for leaks and cross connection. Valve bodies are field adjustable to compensate for variations in plaster thickness of 12.7 mm (1/2") to 19 mm (3/4").

The 152.5 mm (6") Type K copper inlet tube has a 9.5 mm (3/8") ID (12.7 mm (1/2") OD) connection, and can rotate 360 degrees to accommodate any field piping arrangement. The primary gas check can be serviced without shutting off the gas supply.



*Oxequip DISS Medical Gas Outlets*

The outlet stations are fully compliant with NFPA 99 (2002) and CSA Z-305, and are cleaned for oxygen service in accordance with CGA G-4.1. The outlet is UL listed. Rough-in plates for the outlets are zinc plated steel for corrosion resistance and fire safety. Finish plates are die-cast zinc, chrome-plated with brushed stainless inserts for appearance. Gas identification is provided by a polycarbonate plastic insert, color-coded by gas service.

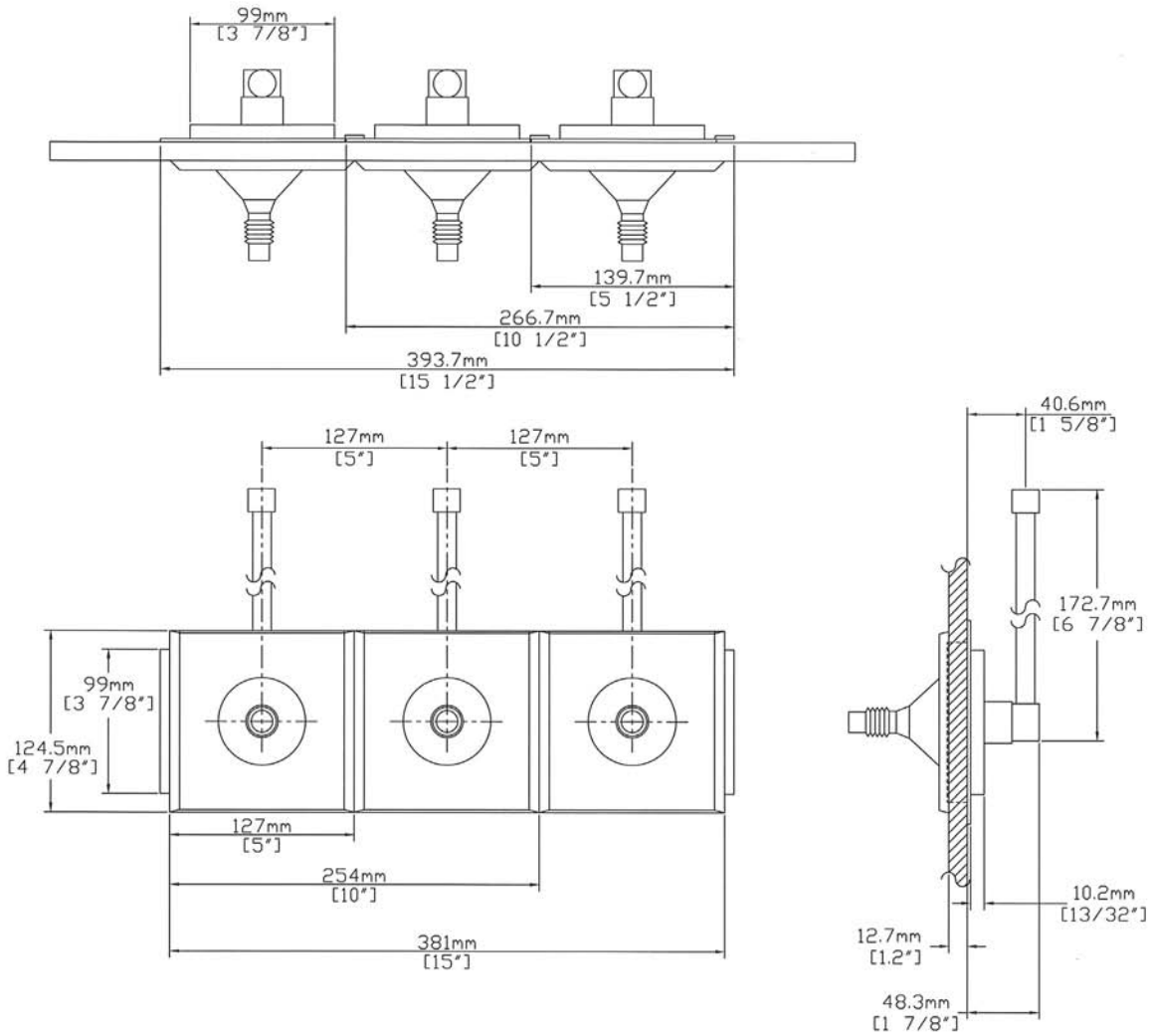
Vacuum outlets may be used with or without slide brackets for vacuum collection bottles of up to 2 liters (1/2 gallon) capacity (where slides are used, provide one per vacuum outlet).

**Ordering Information**

| <b>Gas Service</b> | <b>Catalog Number<br/>U.S. Color Codes</b> | <b>Quantity</b> | <b>Catalog Number<br/>ISO Color Codes</b> | <b>Quantity</b> |
|--------------------|--|-----------------|---|-----------------|
| Oxygen             | 1930-1111                                  |                 | 1930-1121                                 |                 |
| Vacuum             | 1930-1211                                  |                 | 1930-1221                                 |                 |
| Air                | 1930-1411                                  |                 | 1930-1421                                 |                 |
| Nitrous Oxide      | 1930-1311                                  |                 | 1930-1321                                 |                 |
| WAGD               | 1930-1811                                  |                 | 1930-1821                                 |                 |
| Carbon Dioxide     | 1930-1511                                  |                 | 1930-1521                                 |                 |
| Nitrogen           | 1930-1611                                  |                 | 1930-1621                                 |                 |
| Slide Bracket      | 1857-A                                     |                 | 1857-A                                    |                 |
|                    |  |                 |   |                 |

*Product Specification*

**Dimensional Data**



**Refer to installation instructions prior to assembly.**



*Oxequip Med\*Star DISS Medical Gas Outlets*

All specifications are nominal and subject to change without notice.

**Warranty**

See Allied Statement of Warranties for details.

*Customer Service:*

USA: (800) 444-3960

FAX: (314) 771-7537

Canada/ Mexico: (800) 446-0552

FAX: (800) 246-6201

International: (314) 268-1683

FAX: (314) 771-5183

© 2005 Allied Healthcare Product, Inc.® Printed USA



1720 Sublette Avenue  
St. Louis, MO 63110 USA  
(314) 771-2400  
[www.alliedhpi.com](http://www.alliedhpi.com)

**ISO 9001 CERTIFIED**

*Product Specification*