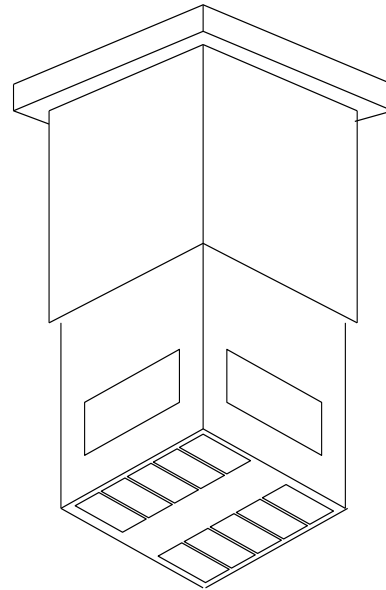


## *Ceiling-Mounted Service Column - Manual Retractable*

### Elements

- Eliminates hoses and wires that clutter the floor
- Provides ready access to medical gas and electrical services near the point of use
- Provides remote receptacles for EEG/EKG, 115 volt electrical service, and ground jack receptacles in addition to the medical gases, including high pressure nitrogen
- Ideal for recovery rooms
- Strong 18 gauge stainless steel shell
- Four IV hooks are standard equipment
- UL listed



### Description

Where indicated on the drawings, provide Manual Retractable Ceiling-Mounted Service Columns for the operating, delivery, cysto, recovery and ICU-CCU rooms. Coordinate with other trades to avoid conflict with other ceiling services.

Retractable ceiling columns shall be constructed of 18-gauge stainless steel with No. 4 finish. The mechanical contractor shall provide medical gas piping to DISS fittings furnished in the structural mounting plate for the ceiling columns. Internal flexible hoses shall be furnished in the ceiling column for final connection between the mounting plate and medical gas outlets.

The column shall incorporate a constant force spring mechanism that will provide a power assist for retraction and maximum extension of up to 18 inches. It shall have a spring-loaded friction brake that maintains the brake in a locked position to avoid unwanted movement until intentionally unlocked with a quarter turn of the smooth surface closed loop handle located on the bottom of the column. The column shall also contain two 3" stabilizing rollers in each of the four corners, located in the retracting shell to assure smooth retraction and extension. Rollers shall be secured by stainless steel brackets welded to the retracting shell.

Medical gas outlets shall be factory installed and tested for function. Retractable ceiling columns for the OR and ICU/CCU can be equipped with the following services:

- Medical gas outlets (bottom mounted)
  - Quick-Connect
  - DISS (Diameter Index Safety System)
- Electrical services (bottom and side mounted)
  - Hubbell 23000 HG, 115V AC receptacles
  - Hubbell 8200, 15/20 amp receptacles
  - Hubbell 8300, GFCI 15/20 amp receptacles
  - 5-terminal receptacles, Amphenol #MS-310OA-14S-5S, for EEG/EKG
  - Hampden SLR-3S ground jack receptacles
  - RJ data jack/telephone jack

Note: Internal wiring of electrical devices shall be the responsibility of the electrical contractor.

Note: Per NFPA revision 2012, any retractable ceiling column installed in a designated wet location must be equipped with one GFCI receptacle per electrical circuit.

Four IV hooks shall be supplied with each ceiling column.

## Ordering Information - Manual Retractable Service Column

Chemetron Retractable Ceiling-Mounted Columns are manufactured to customer specifications. The following steps must be completed prior to the manufacture of the ceiling column.

### Step 1

General information to remember when selecting the devices in a ceiling column:

- Use of EEG/EKG remote monitoring with electric power receptacles is not recommended in retracted columns without properly shielded monitor cable. Consult monitor manufacturer.
- Retractable columns are not recommended for ceiling heights below 9'6".
- Fully retracted length is 36" from ceiling.
- Specify color for electrical outlets.
- Monitor receptacles should be wired under monitor manufacturer's recommendations for proper shielding.
- Adjacent electrical receptacles will be provided in double, triple or quadruple configurations with common back box and cover. Adjacent ground receptacles or other adjacent electrical receptacles of the same type will be furnished with common back box and cover plate for installation convenience.
- In the fully retracted position the bottom of the column is 6'6" above the floor for a 10' ceiling height, or 6' above the floor for a 9'6" ceiling height.
- Wiring to factory installed electrical receptacles shall be provided by others.

### Step 2

Indicate the ceiling height of the room in which the ceiling column will be located. In the fully retracted position the bottom of the column is 6'6" above the finished floor. The ceiling column is designed for heights of 9'6" to 10'0". Ceiling heights less than 9'6" will require submounting.

Quantity \_\_\_\_\_

Ceiling Height \_\_\_\_\_ Column Length \_\_\_\_\_

### Step 3

Select the style of medical gas outlet installed in the ceiling column. If nitrogen is used in the column indicate the style of outlet to be installed.

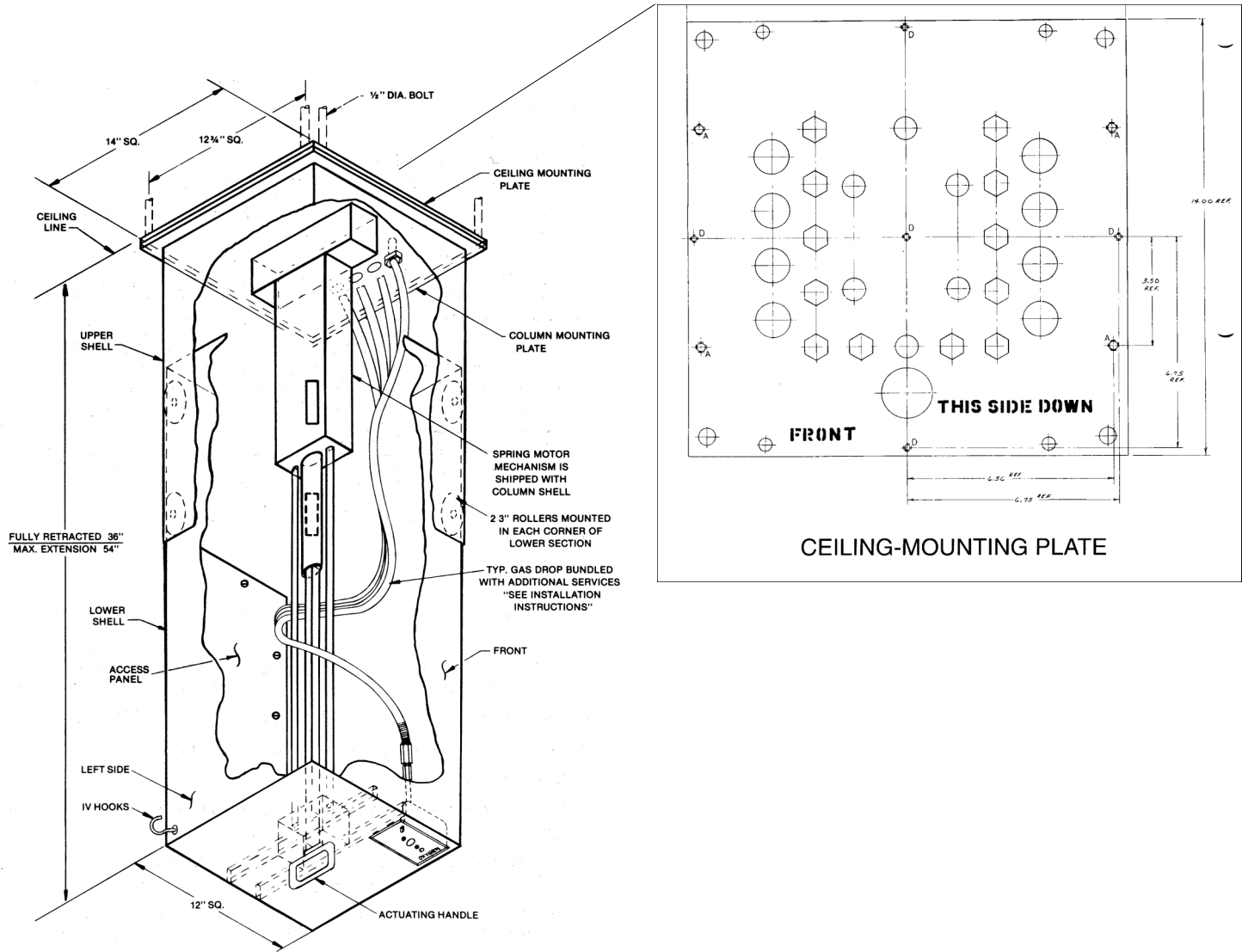
_____ Chemetron® Quick-Connect	_____ Oxequip® Quick-Connect	_____ <u>Nitrogen</u>
_____ Cnnect2® Quick-Connect	_____ DISS	_____ DISS
_____ Puritan Bennett style quick-connect		_____ Dyna-Con
		_____ Schrader

### Step 4

The drawing on the next page shows the bottom view of the stainless steel column. Symbols on the drawing indicate where various accessories may be located. Select the accessories desired and the location on the column from the table shown on the next page.



**Installation Information**



All specifications are nominal and subject to change without notice.

Warranty:  
See Allied Statement of Warranties for details.

© 2012 Allied Healthcare Products, Inc.® Printed in USA

Customer Service:

USA: (800) 444-3960  
 FAX: (314) 771-7537  
 Canada/Mexico: (800) 446-0552  
 FAX: (800) 246-6201  
 International: (314) 268-1683  
 FAX: (314) 771-5183



1720 Sublette Avenue  
 St. Louis, MO 63110 USA  
 (314) 771-2400  
 www.alliedhpi.com  
**ISO 9001: 2008**