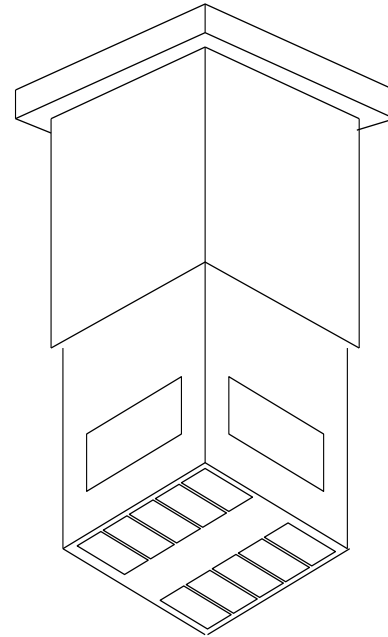


Ceiling-Mounted Service Column - Vacuum Powered Retractable

Elements

- Eliminates hoses and wires that clutter the floor
- Provides ready access to medical gas and electrical services near the point of use
- Provides remote receptacles for EEG/EKG, 115 volt electrical service, and ground jack receptacles in addition to the medical gases, including high pressure nitrogen
- No push or shove needed to extend or retract with the vacuum-powered piston doing the work
- Ideal for recovery rooms
- Strong 18 gauge stainless steel shell
- Four IV hooks are standard equipment



Description

Where indicated on the drawings, provide Vacuum Piston-powered Retractable Ceiling-Mounted Service Columns for the operating, delivery, cysto, recovery, and ICU-CCU rooms. Coordinate with other trades to avoid conflict with other ceiling services.

Retractable ceiling columns shall be constructed of 18-gauge stainless steel with No. 4 finish. The mechanical contractor shall provide medical gas piping to DISS fittings furnished in the structural mounting plate for the ceiling columns. Internal flexible hoses shall be furnished in the ceiling column for final connection between the mounting plate and medical gas outlets.

The vacuum powered piston mechanism, housed in the upper section, shall be actuated by a three-position valve for up-stop-down movement. The actuating valve shall be located on the bottom of the column. The valve shall automatically close when the column reaches full retraction or extension. A positive stop mechanism shall hold the column at any desired height between retracted length of 36" and extended length of 54".

Medical gas outlets shall be factory installed and tested for function. Retractable ceiling columns for the OR and ICU/CCU can be equipped with the following services:

- Medical gas outlets (bottom mounted)
 - Quick-Connect
 - DISS (Diameter Index Safety System)
- Electrical services (bottom and side mounted)
 - Hubbell 23000 HG, 115V AC receptacles
 - Hubbell 8200, 15/20 amp receptacles
 - Hubbell 8300, GFCI 15/20 amp receptacles
 - 5-terminal receptacles, Amphenol #MS 3100A-14S-5S, for EEG/EKG
 - Hampden SLR-3S ground jack receptacles
 - RJ data jack/telephone jack

Note: Internal wiring of electrical devices shall be the responsibility of the electrical contractor.

Note: Per NFPA revision 2012, any retractable ceiling column installed in a designated wet location must be equipped with one GFCI receptacle per electrical circuit.

Four IV hooks shall be supplied with each ceiling column.

Ordering Information - Vacuum Powered Retractable Service Column

Chemetron Retractable Ceiling-Mounted Columns are manufactured to customer specifications. The following steps must be completed prior to the manufacture of the ceiling column.

Step 1

General information to remember when selecting the devices in a ceiling column:

- Use of EEG/EKG remote monitoring with electric power receptacles is not recommended in retracted columns without properly shielded monitor cable. Consult monitor manufacturer.
- Retractable columns are not recommended for ceiling heights below 9'6".
- Fully retracted length is 36" from ceiling.
- Specify color for electrical outlets.
- Monitor receptacles should be wired under monitor manufacturer's recommendations for proper shielding.
- Adjacent electrical receptacles will be provided in double, triple or quadruple configurations with common back box and cover. Adjacent ground receptacles or other adjacent electrical receptacles of the same type will be furnished with common back box and cover plate for installation convenience.
- In the fully retracted position the bottom of the column is 6'6" above the floor for a 10' ceiling height, or 6' above the floor for a 9'6" ceiling height.
- Wiring to factory installed electrical receptacles shall be provided by others.

Step 2

Indicate the ceiling height of the room in which the ceiling column will be located. In the fully retracted position the bottom of the column is 6'6" above the finished floor. The ceiling column is designed for heights of 9'6" to 10'0". Ceiling heights less than 9'6" will require submounting.

Quantity _____

Ceiling Height _____

Column Length _____

Step 3

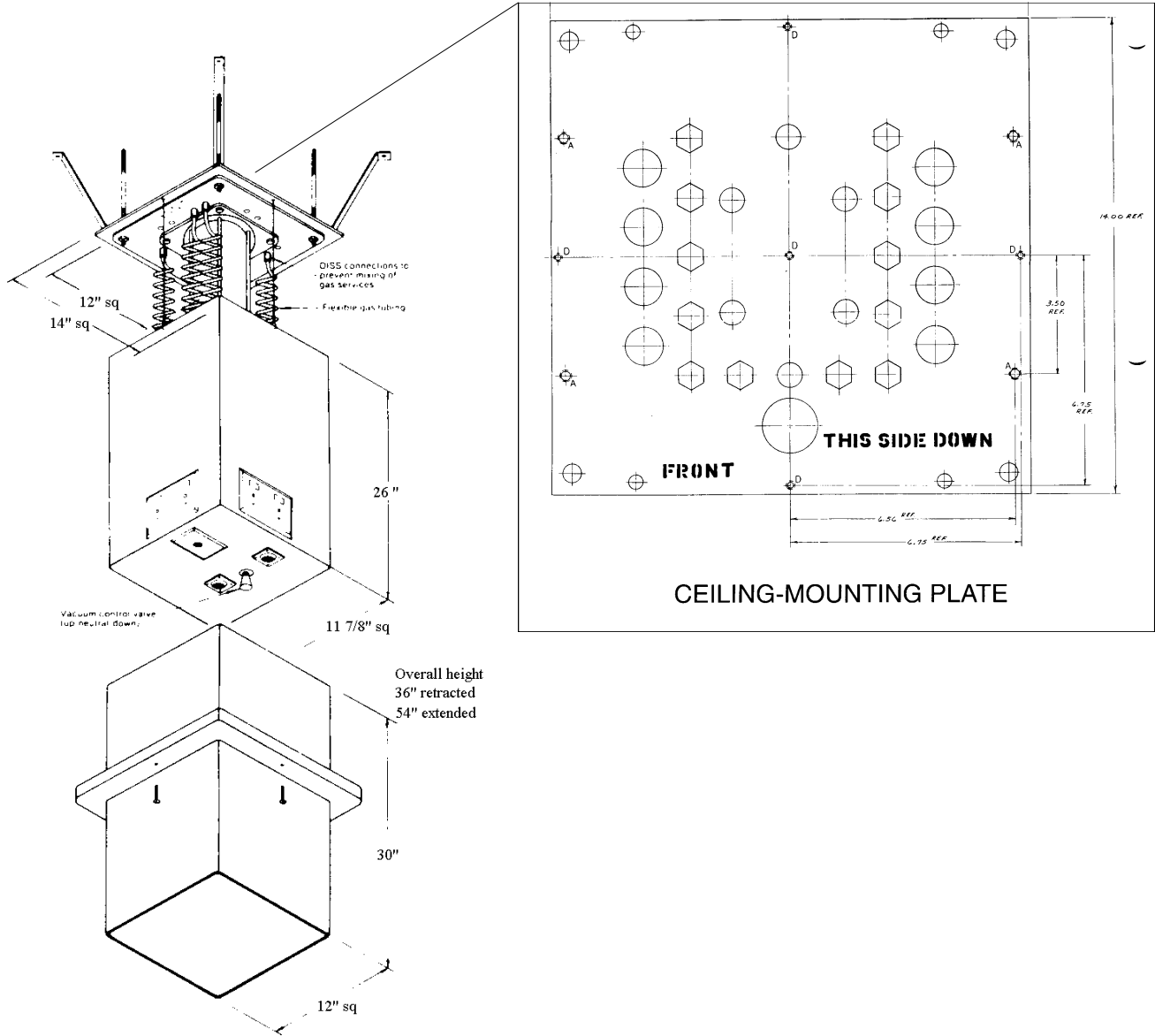
Select the style of medical gas outlet installed in the ceiling column. If nitrogen is used in the column indicate the style of outlet to be installed.

| | | |
|---|------------------------------|----------------|
| _____ Chemetron® Quick-Connect | _____ Oxequip® Quick-Connect | _____ Nitrogen |
| _____ Chemetron® Quick-Connect | _____ DISS | _____ DISS |
| _____ Puritan Bennett style quick-connect | | _____ Dyna-Con |
| | | _____ Schrader |

Step 4

The drawing on the next page shows the bottom view of the stainless steel column. Symbols on the drawing indicate where various accessories may be located. The gas piston that runs through the center of the vacuum powered retractable ceiling column is larger in diameter than other columns therefore limiting the total available space for piping medical gas outlets. Because of this, there are certain positions on the vacuum powered column that cannot accommodate medical gas outlets. A maximum of 12 medical gas outlets can be installed per the limitations shown on the drawing on the next page. There are no restrictions for electrical outlets. To finish configuring a vacuum powered column, Select the accessories desired and the location on the column from the table shown on the next page.

Installation Information



All specifications are nominal and subject to change without notice.

Warranty:
See Allied Statement of Warranties for details.

© 2012 Allied Healthcare Products, Inc.® Printed in USA

Customer Service:
USA: (800) 444-3960
FAX: (314) 771-7537
Canada/Mexico: (800) 446-0552
FAX: (800) 246-6201
International: (314) 268-1683
FAX: (314) 771-5183



HEALTHCARE PRODUCTS INC.
1720 Sublette Avenue
St. Louis, MO 63110 USA
(314) 771-2400
www.alliedhpi.com
ISO 9001: 2008